



Ole Goes to Sioux Falls

by Craig Rhombs

Contact information

- Email: craig@281connections.us
- Website: <https://281connections.us>
- Great grandson of Ole →
- Details in - https://281connections.us/281connections_Wiki/South_Dakota_Families/Thompson-Olsen/OleGoesToSiouxFalls.pdf



About Ole

- Ole Thorsen (Prestegard/Runhaugen/Mølsknaes) was born in the Parish of Vågå in Oppland County, Norway, 16-December-1853. He died in 1929 in Potter Co., SD.
- Ole married Caroline Olsen (Karoline Olsdatter Brattasvedjan) near Trondheim in the Øvre Stjørdal Parish of Nord-Trøndelag on 01-May1881.



How do I know this? - examples

- Indexed search: <https://www.digitalarkivet.no/en/>
- And <https://media.digitalarkivet.no/en/kb/browse> (browse church books)
- Ole's birth - <https://media.digitalarkivet.no/view/8917/257>
- Ole's birth - Vågå prestekontor, AV/SAH-PREST-076/H/Ha/Haa/L0005: Parish register (official) no. 5 /1, 1842-1856, p. 324

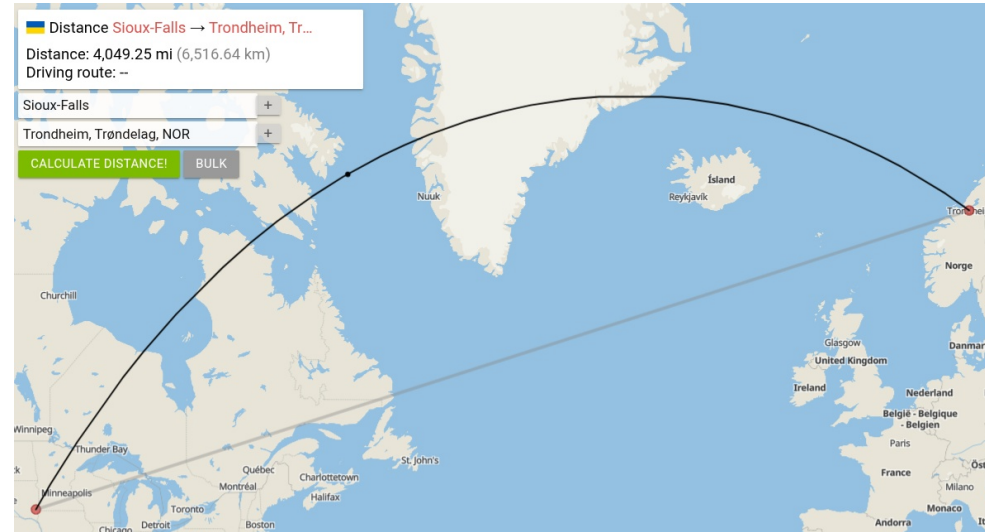
Emigration in May, 1881, from Trondheim

- Ole's emigration record is dated 04-May-1881 (a Wednesday), and it indicates that he was booked on a ship called the Tasso which was operated by the Allan Line.
- Caroline left behind.
- Example search – start here
<https://www.digitalarkivet.no/en/search/persons/advanced>
; emigration, 1881, Ole T. Rundhaugen, Trondelag
- <https://urn.digitalarkivet.no/URN:NBN:no-a1450-em20110302620437.jpg>



Segments of his journey

- Trondheim to Hull (England)
- Hull to Liverpool
- Liverpool to Quebec (City)
- Quebec to Sioux Falls, Dakota Territory
- Total distance: more than ~5000 miles
- Total duration ~ a month



Trondheim to Hull

- Description by Ingeborg Olsdatter Øye
- <https://www.norwayheritage.com/> is a good site for lots of different information
- <https://www.norwayheritage.com/articles/templates/voyages.asp?articleid=76&zoneid=6>
- *“We are now out on the North Sea, so we can not see land in any direction. The ship crew says that we will have good weather, but despite of that the ship is rolling about on the waves of the North Sea. Since dinnertime yesterday I have been free from sea sickness, and yesterday I had a "grown" supper. My sleeping accommodations were good, as there were 5 of us who slept on the deck with some blankets over us, as the bedrooms were overcrowded.”*

Hull to Liverpool

- By rail (station at right)
- Common path - over 3 million people took a similar route between 1836 and 1914.
- Reference: University of Hull article by N.J. Evans
<https://doi.org/10.1080/21533369.2001.9668313>

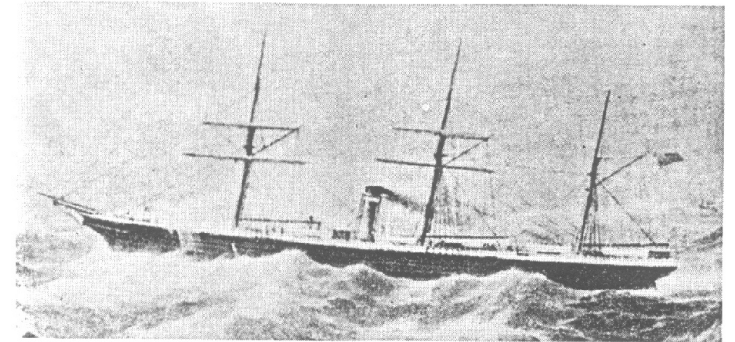


Liverpool to Quebec

- SS Moravian
- 12-May to 21-May
- A flier gives interesting tips about what it was like.

<https://commons.wikimedia.org/wiki/File:Allan-Line-Fares-List-1890s.JPG>

- You could get gruel every evening at 8 PM!



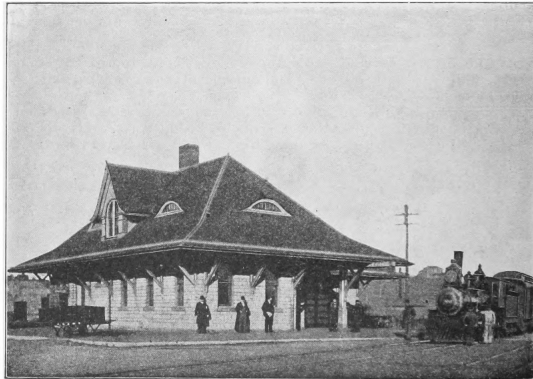
S.S MORIVIAN, 1864 Allan Line
courtesy: The Peabody Museum of Salem

THE DIETARY SCALE FOR STEERAGE PASSENGERS IS AS FOLLOWS:—
Sunday.—BREAKFAST—7.30 a.m., Coffee, Milk and Sugar, Fresh Bread and Butter. DINNER—12 Noon, Soup, Fresh Beet, Potatoes, Plum Pudding and Sauce. TEA—5 p.m., Tea, Milk and Sugar, Bread and Butter. **Monday.**—BREAKFAST—Coffee, Milk and Sugar, Fresh Bread and Butter. DINNER—Soup, Beef and Potatoes. TEA—Tea, Milk and Sugar, Fresh Bread and Butter. **Tuesday.**—BREAKFAST—Oatmeal Porridge and Syrup, Coffee, Milk and Sugar, Fresh Bread and Butter. DINNER—Pea Soup, Salt Pork and Potatoes. TEA—Tea, Milk and Sugar, Fresh Bread and Butter. **Wednesday.**—BREAKFAST—Coffee, Milk and Sugar, Fresh Bread and Butter. DINNER—Soup, Beef and Potatoes, Plum Pudding and

Quebec to Sioux Falls (Quo Vadis?)

Good reference map = *Colton's railroad & commercial map of the United States and Canada* <http://hdl.loc.gov/loc.gmd/g3700.rr000510>

- Quebec City to Montreal to St. Albans (VT, USA) and then by rail to Sioux Falls?
- Quebec City to Port Huron (MI, USA) via the Grand Trunk Western Railway (GTWR), and then to Chicago, etc.?

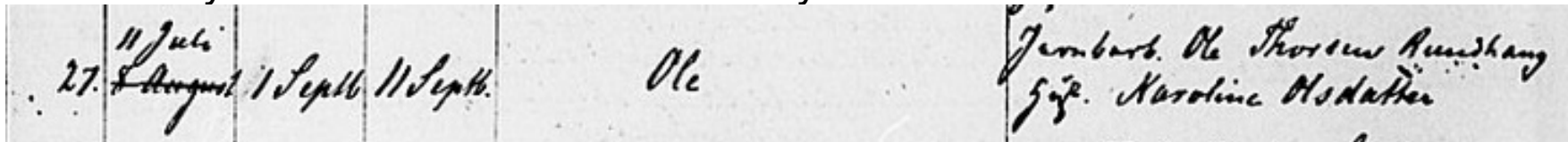


CHICAGO, MILWAUKEE AND ST. PAUL PASSENGER DEPOT.



What about Caroline??

- Child (Ole) born in July (same year - 1881)
- <https://media.digitalarkivet.no/view/6619/11>
- Both emigrate in November; search as before
- Scanned version:
<https://urn.digitalarkivet.no/URN:NBN:no-a1450-em20110302620560.jpg>
- Exact path not found. Starts with SS Hero.
- Child may have died in transit or shortly after arrival in Sioux Falls.



Epilogue

- Spent about a year in Sioux Falls/Centerville area
- 1883 - move to a homestead in Potter Co., SD
- Somewhere along the line the surname of Thompson was acquired - just to confuse me :-).
- Start fresh . . .



Thanks for your time . . .

- Good Luck in your research
- If you ever want to discuss it with a group of interested and interesting people, consider the Westside Genealogy Group. It is free. - <https://groups.io/g/Westside-Generalogy-Group>

